

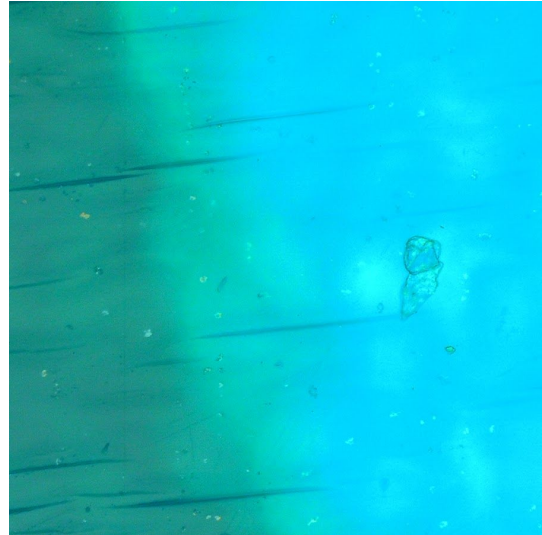
# Avery Dennison®

## TrafficJet™ Digital Print Dwell Time

Instructional Bulletin : # 9.23  
Revision : # 03  
Last Updated : July 2018

Proper traffic sign performance requires that printed media be fully cured and dried prior to applying protective overlaminates. Dwell time, or the time during which outgassing of solvents in TrafficJet inks occurs, must be adhered to in order to assure proper curing and drying.

When the appropriate dwell time and procedures are not followed, there is a potential to produce a traffic sign with altered color and/or retroreflective performance. If laminating immediately after printing, high levels of residual solvents can be trapped between the print surface and protective overlay film. Solvents can attack the overlay film, resulting in microcracks which scatter light and affect color and retroreflectivity, as seen below.



Microcracks (magnified)

### In order for the printed media to successfully outgas, please follow these procedures:

1. Remove the printed sheeting from the printer take up spool
2. Unbind the printed sheeting by one of the following methods. (A) expose the printed sheeting print-side up on a flat surface, or (B) stand the roll upright on its plastic suspension core, or upright on an elevated floor grid to improve airflow, and unwind the roll as shown in figure 1 to allow air to circulate over the printed areas. Figure 2 illustrates improper unwinding - continue to loosen the roll until it resembles figure 1.
3. Allow the printed sheeting to remain in this state for a minimum of 2 hours after unwinding before OL1000 is applied to the printed surface. For customers using OL2000, recommendations for dwell time differ by region, please contact your local sales or tech rep for guidance.



Figure 1: Proper unwinding



Figure 2: Improper unwinding

### OL1000 Anti-Graffiti Film & Protective Overlay

OL1000 utilizes a unique chemical composition rendering it highly resistant to solvents which makes it an effective protective overlay to guard against solvent damage during the removal of graffiti. This property increases the value of the finished sign to the end using agency, making OL1000 the protective overlay film of choice.

### Dwell Time Requirements

Protective Overlaminate	Minimum Dwell Time
OL1000 Anti-Graffiti Film for traffic signage	Minimum 2 hours after printing
OL2000 Clear Overlay for traffic signage	Please contact your local sales or tech rep for instructions
DOL Overlaminate for graphic decals and signage	Minimum 24 hours after printing

The above Avery Dennison literature provides information to the user for proper application, storage and other requirements. Please refer to Product Data Bulletins or your local Avery Dennison Representative for warranty information. Find the latest information on the Avery Dennison website, [www.reflectives.averydennison.com](http://www.reflectives.averydennison.com). We encourage you to check our website periodically for updates.

All statements, technical information and recommendations about Avery Dennison products are based upon tests and information believed to be reliable, but do not constitute a guarantee or warranty of any kind. All Avery Dennison products are sold with the understanding that Purchaser has independently determined the suitability of such products for its intended and other purposes.

For technical questions, please contact:

North America: [reflective.tech.na@averydennison.com](mailto:reflective.tech.na@averydennison.com)  
 Europe, Middle East & Africa: [reflective.tech.eu@eu.averydennison.com](mailto:reflective.tech.eu@eu.averydennison.com)  
 Asia Pacific: [reflective.tech.ap@ap.averydennison.com](mailto:reflective.tech.ap@ap.averydennison.com)  
 South America: [reflective.tech.sa@averydennison.com](mailto:reflective.tech.sa@averydennison.com)